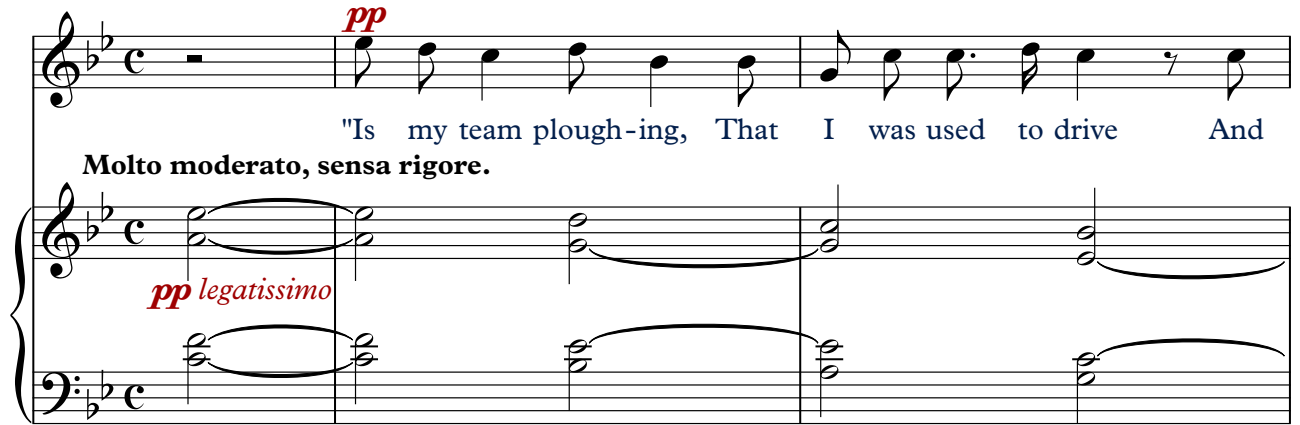


## IS MY TEAM PLOUGHING?

from 6 Songs from a Shropshire Lad

George Butterworth (1885 - 1916)  
 Alfred Edward Housman (1859 - 1936)  
 Transcribed by Conrad Steven

**Molto moderato, senza rigore.**



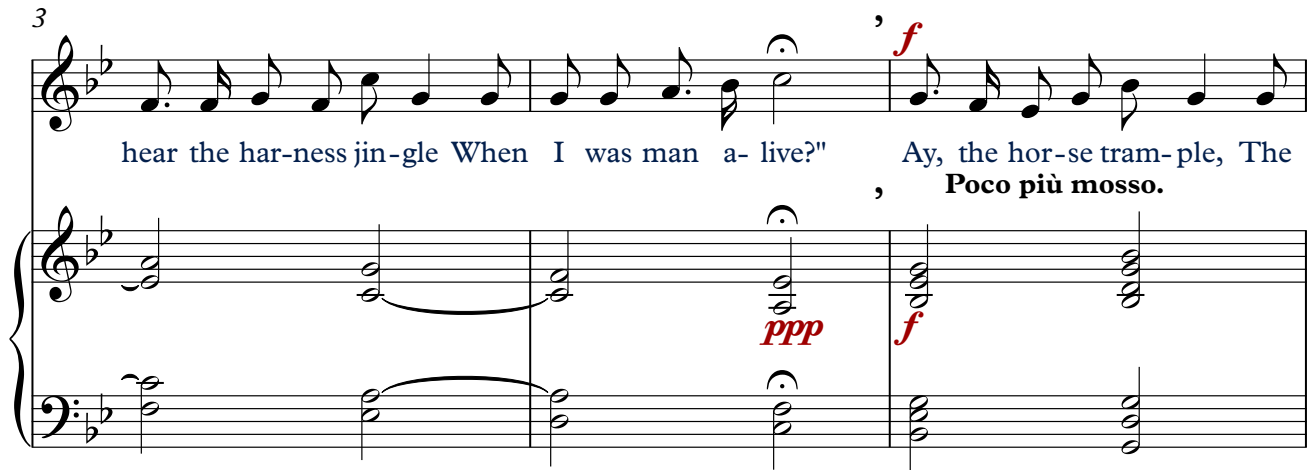
*pp*

"Is my team plough-ing, That I was used to drive And

**Molto moderato, senza rigore.**

*pp legatissimo*

**Poco più mosso.**



3

hear the har-ness jin-gle When I was man a- live?" Ay, the hor-se tram-ple, The

*f*

**Poco più mosso.**

*ppp* *f*



6

har-ness jin-gles now: No change though you lie un-der The land you used to plough.

*rit. dim.*

*rit.*

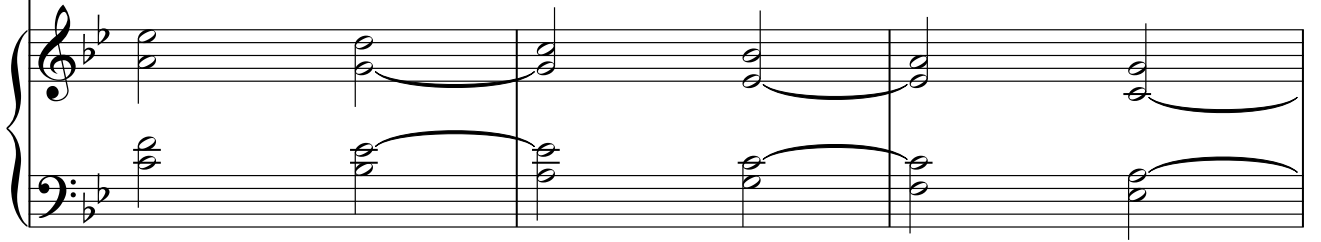


9 **Tempo I.**

*pp*



"Is foot-ball play-ing A - long the ri-ver-shore, With lads to chase the lea-ther, Now **Tempo I.**



12

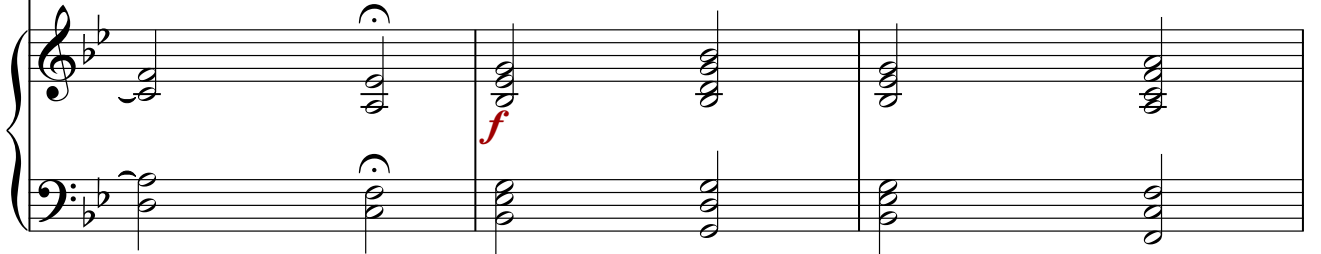
, **Poco più mosso.**

*f*



I stand up no more?" Ay, the ball is fly-ing, The lads play heart and soul; The

, **Poco più mosso.**



15

**rit.**

*dim.*

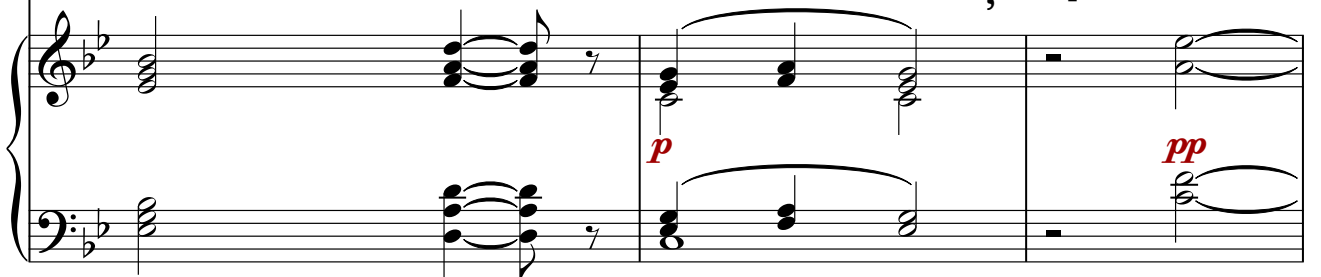
, **Tempo I.**



goal stands up, the keep - er Stands up to keep the goal.

**rit.**

, **Tempo I.**

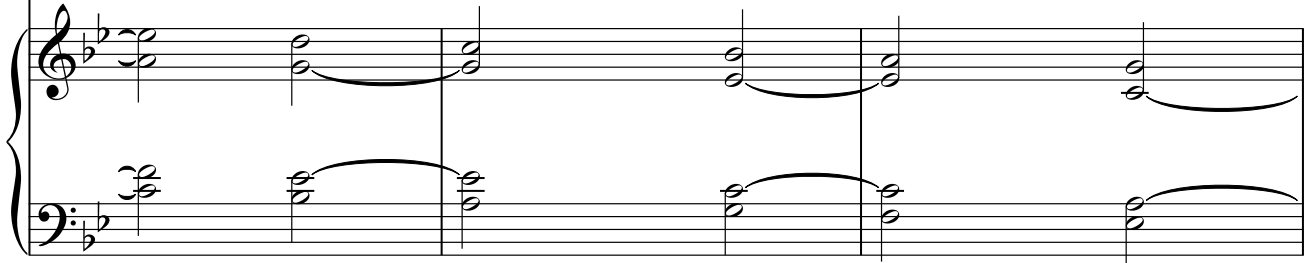


18

*pp*



"Is my girl hap-py, That I thought hard to leave, And has she tired of weeping As



21

**Poco più mosso.**

*f*

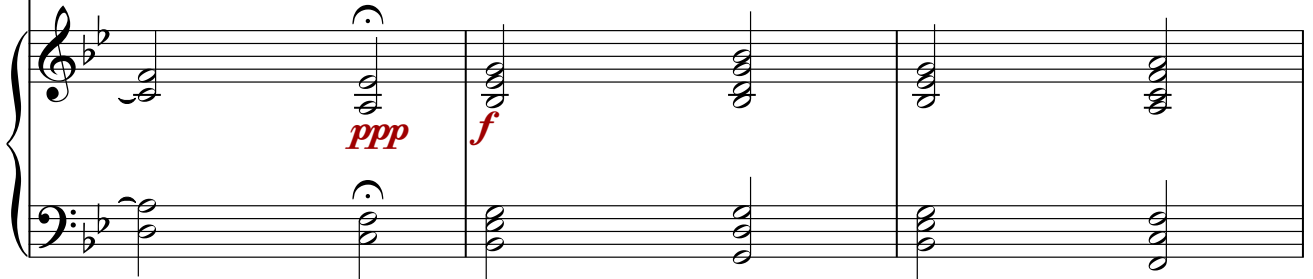


she lies down at eve?" Ay, she lies down light-ly, She lies not down to weep: Your

**Poco più mosso.**

*ppp*

*f*



24

**rit.**  
*dim.*

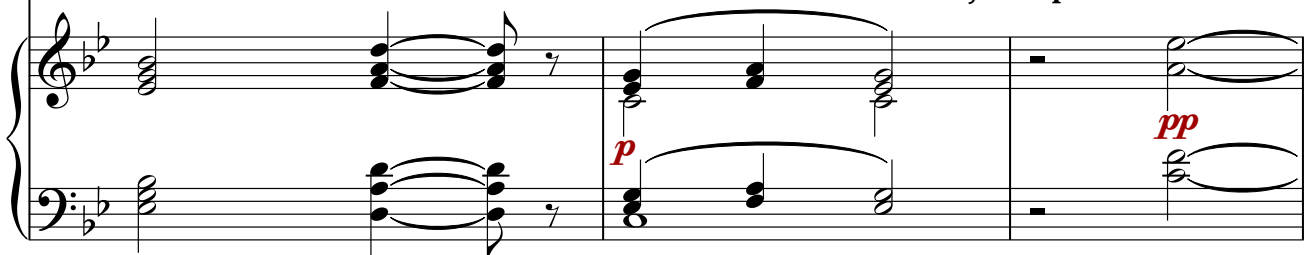
**, Tempo I.**



girl is well con-tent-ed. Be still, my lad, and sleep.

**rit.**

**, Tempo I.**

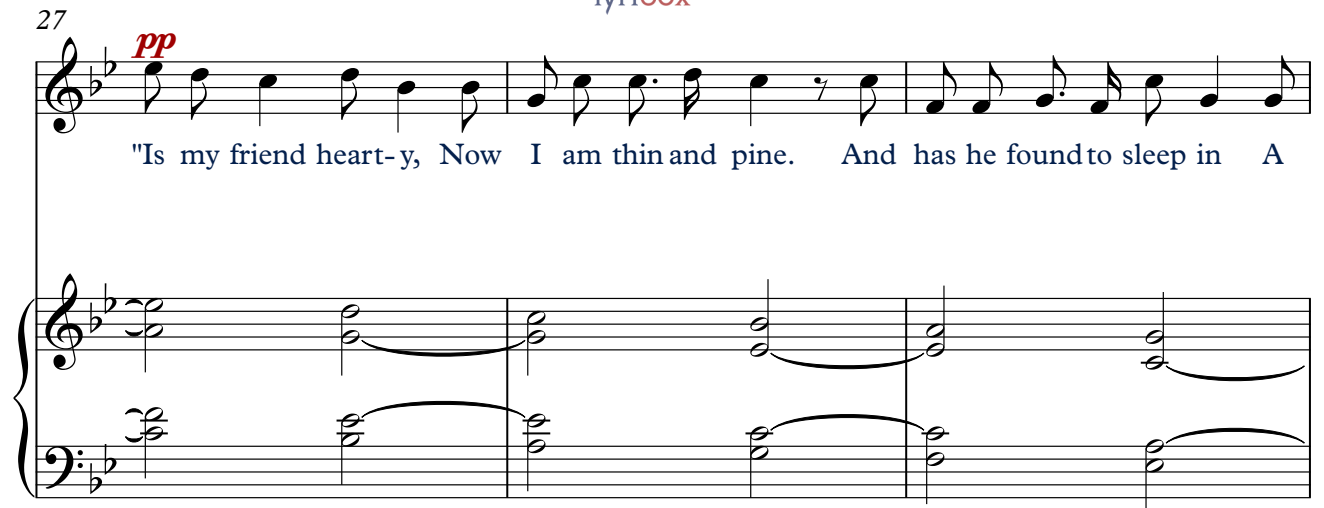


*p*

*pp*

27 *pp*

"Is my friend heart-y, Now I am thin and pine. And has he found to sleep in A



30 , *f* **Poco più mosso.**

bet ter bed than mine?" Yes, lad, I lie ea-sy, I lie as lads would choose; I

, **Poco più mosso.**

*ppp* *f*

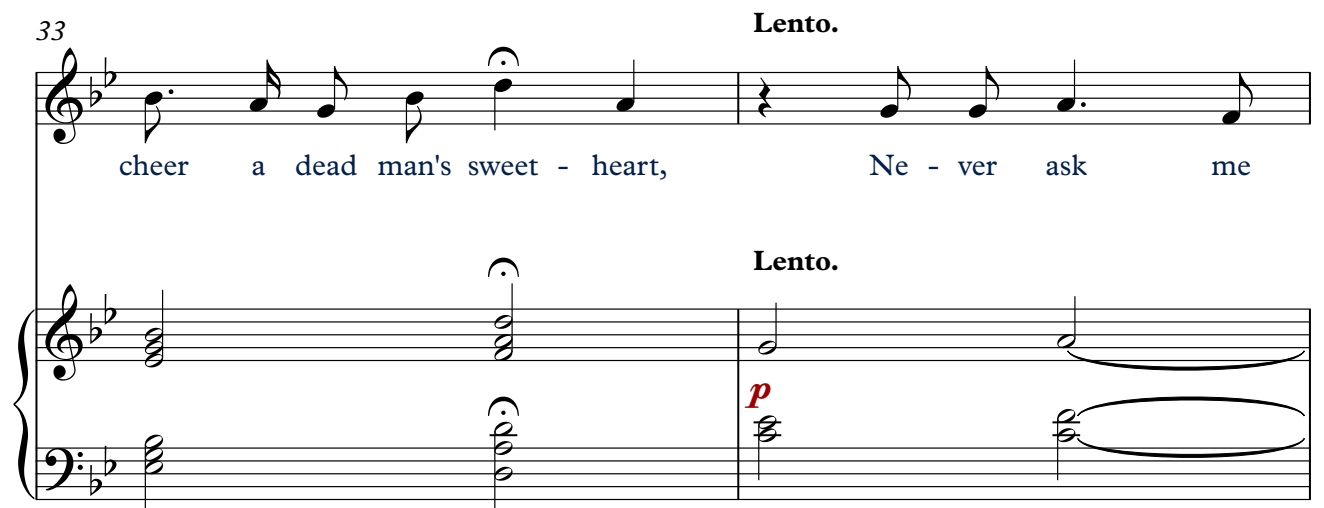


33 **Lento.**

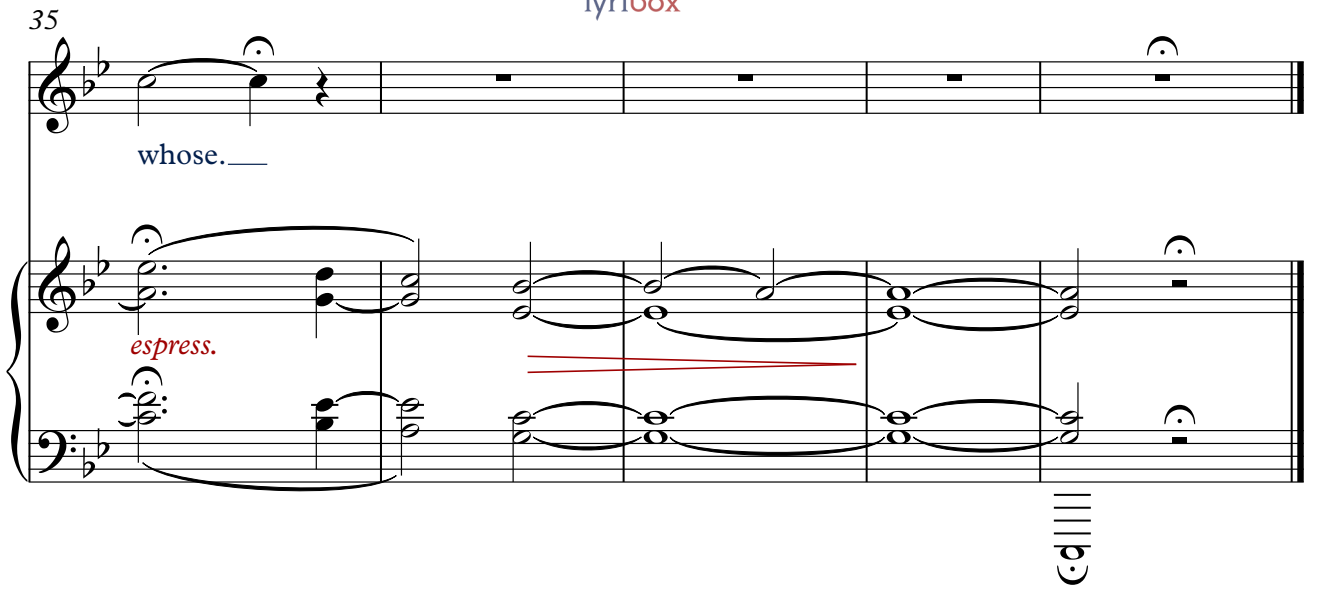
cheer a dead man's sweet - heart, Ne - ver ask me

**Lento.**

*p*



35



whose.\_\_\_\_

*espress.*

©

The image shows a musical score for a voice and piano piece. The score is written in a key signature of two flats (B-flat and E-flat) and a 4/4 time signature. The voice part is on a single staff with a treble clef, and the piano part is on two staves (treble and bass clefs). The voice part begins with the word "whose." followed by a long line indicating a sustained note. The piano part features a melodic line in the right hand and a supporting bass line in the left hand, both with long notes and ties. A red horizontal line is drawn across the piano part, and a red vertical line is drawn below the piano part. The page number "35" is in the top left, and the page number "5" is in the top right. The Lyribox logo is at the top center. The copyright notice "©" is at the bottom right.